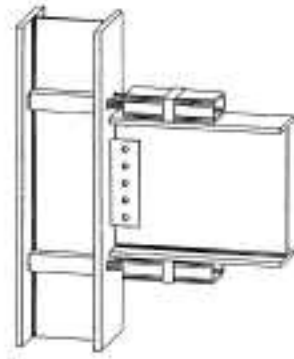
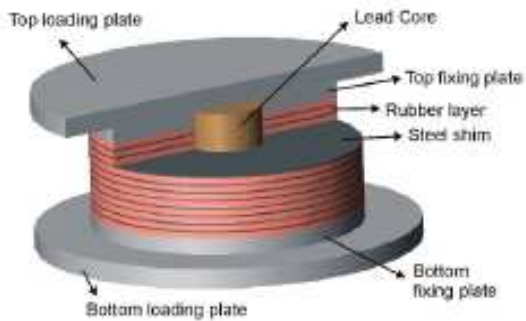


# SMA, civil engineering applications

**Problem:** Shape Memory Alloy are smart material that could provide effective solution in civil engineering problems. Nevertheless the peculiar properties of the material require peculiar design criterion and normative specifications.

**Objective:** Review national and international normative in order to highlight gaps and requested improvements in order to lead and effective design and application of SMA.



Type: Literature review

## References

Simone Righi

*Usa dei Materiali a Memoria di Forma in ambito strutturale: Aspetti normativi ed applicazioni, 2014*

.



Thesis proposal